



*It's where you want to be<sup>SM</sup>*



**EMERALD**  
*Spas<sup>TM</sup>*

## **Emerald's Spas**

The benefits of owning an Emerald Spa are as diverse as our many available features. Our spas provide a wonderful experience for relaxation, revitalization and recreation. Spas are perfect for stress reduction, for relieving aches and pains, for sleep enhancement and especially as a gathering place for family and friends.

Emerald Spa builds a highly respected product and has led the industry in innovation since our beginnings nearly 30 years ago under the Polynesian Spa brand name. Each Emerald spa uses advanced design, innovative engineering, and provides ultimate performance. Our spas are built with an emphasis on quality and trouble-free operation so you get the most satisfaction from your spa ownership.



*Relaxation*

*Revitalization*

*Recreation*



## The Emerald Difference

Nearly twenty years ago we designed the industry's first ergonomic spa. This revolutionary approach created luxurious seating with real support and exceptional comfort. Today our ErgoComfort™ shells continue to be the standard by which spa comfort is judged—you have to sit in one to believe it!

Emerald Spa builds the most durable shell in the industry. Our system of Lucite® Acrylic reinforced with Acrybond™ and fiberglass is simply the strongest you can buy. It is built to last a lifetime and we back it with the best warranty in the industry.

All Emerald Spa insulation systems are thermopane engineered to maximize energy efficiency and minimize cost-of-use.

Our MassageAir™ Therapy System employs unique High-Performance Jet Select™ technology which mixes both water and air together to provide unparalleled hydrotherapy.

Our EverClean™ Water Purification System incorporates pressurized filtration, working in concert with Spa Frog® sanitization technology, Lucite® Acrylic shell with Microban®, Ozone Generator, and antimicrobial filter element with Microban®. Together they produce clean, safe water while reducing spa maintenance.



### Our Warranty

Our confidence with your satisfaction is represented in the outstanding warranties we offer on all our spas. Each spa is built to order so you can be assured of getting the exact spa experience you desire.

*It's where you want to be<sup>SM</sup>*



# MANOR SERIES

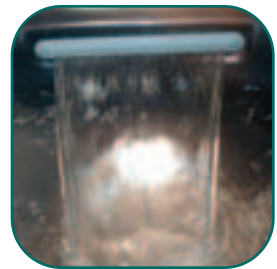




Shown with a Redwood Durabilt™ cabinet and Desert Horizon Lucite® Acrylic with Microban®



*Manor Series spas feature Intensive Neck Therapy™ jets*



*Manor Series spas feature a soothing Waterfall*



## M970

Immerse yourself in the rippling, therapeutic waters of this deep lounging spa and discover the ultimate in healthy indulgence. From the soothing cascade of the Waterfall jet and the powerful Tsunami jet, to the dual Intensive Neck Therapy stations and optional Intensive Foot Massage™, this four- to five-person spa pampers from head to toe.

- 965 lbs./360 gal. Capacity
- 94" x 81" x 38"H
- Three Pumps/10.6 hp Market-Rated
- Single Lounger
- Captain's Chair
- Intensive Neck Therapy™ (2 total)
- Turbo Jet/Tsunami Jet/Waterfall
- Optional Intensive Foot Massage™

**4-5**  
PERSON

**70**  
JETS

**3**  
PUMPS

*Additional features on pages 26–27*

## M870 MODEL



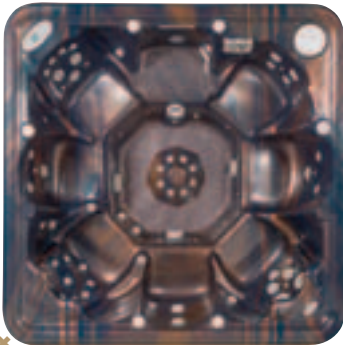
*Manor Series spas feature a powerful Tsunami jet*



*The M870 is available with multi-person foot jets*



Shown with a Redwood Durabilt™ cabinet and Sunset Swirl Lucite® Acrylic with Microban®



## M870

Create the perfect sanctuary for relaxing, rejuvenating and reconnecting with family and friends. For the ultimate in entertaining add the optional HydroVibe™ Audio System. This superior spa features 70 water and air jets configured around eight comfortable seating options for a totally custom spa experience.

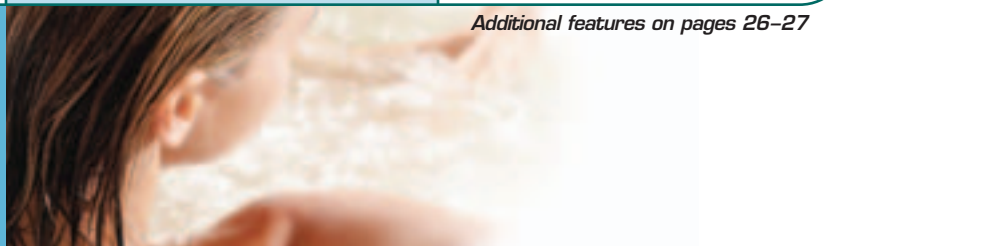
- 1015 lbs./430 gal. Capacity
- 93" square x 40"H
- Three Pumps/10.6 hp Market-Rated
- Non-Lounger
- Captain's Chairs (3 total)
- Intensive Neck Therapy™ (2 total)
- Turbo Jet/Tsunami Jet/Waterfall
- Optional Intensive Foot Massage™

**8**  
PERSON

**70**  
JETS

**3**  
PUMPS

*Additional features on pages 26-27*





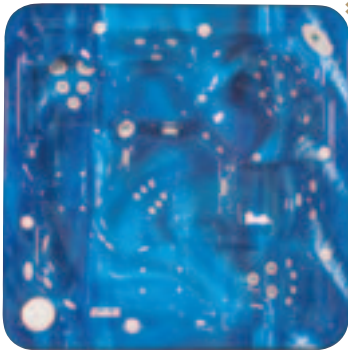
Shown with a Redwood Durabilt™ cabinet and Summer Sapphire Lucite® Acrylic.



*Manor Series spas feature a High-Performance Jet Select™*



*Manor Series spas available with Intensive Foot Massage™*



## M770

Revitalize with a rigorous, stress-relieving massage or simply stretch out and relax in the soothing waters of this versatile spa. Double loungers offer roomy luxury for quality couple's time. A dramatic corner captain's chair and ultra-comfortable bucket seats stretch the seating options to six adults.

- 990 lbs./315 gal. Capacity
- 93" square x 38"H
- Three Pumps/10.6 hp Market-Rated
- Double Lounger
- Captain's Chair
- Intensive Neck Therapy™ (2 total)
- Turbo Jet/Tsunami Jet/Waterfall
- Optional Intensive Foot Massage™

**6**  
PERSON

**70**  
JETS

**3**  
PUMPS

*Additional features on pages 26–27*

## M670 MODEL



Manor Series spas  
available with  
HydroVibe™ Audio System



Captain's Chair



Shown with a Grey Durabilt™  
cabinet and Pearl Shadow  
Lucite® Acrylic with Microban®



## M670

Relax and unwind or entertain and interact in this sociable, spacious spa that easily accommodates six adults. From the soothing cascade of the Waterfall jet to a unique configuration of 70 water and air jets, this ultimate spa experience provides the perfect combination of invigorating massage and comfortable relaxation for everyone.

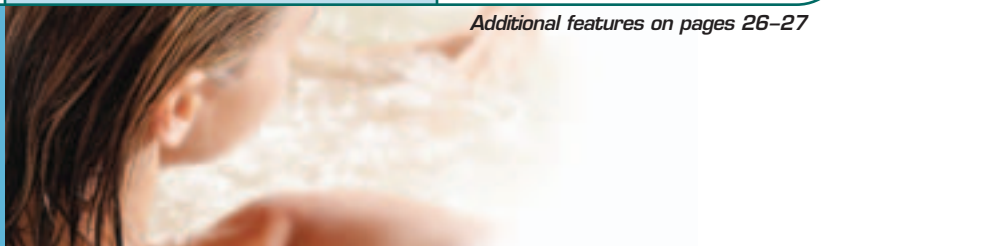
- 870 lbs./305 gal. Capacity
- 85" square x 38"H
- Three Pumps/10.6 hp Market-Rated
- Non-Lounger
- Captain's Chairs (3 total)
- Intensive Neck Therapy™ (2 total)
- Turbo Jet/Tsunami Jet/Waterfall
- Optional Intensive Foot Massage™

**6**  
PERSON

**70**  
JETS

**3**  
PUMPS

*Additional features on pages 26-27*





Shown with a Redwood Durabilt™ cabinet and Majestic Sky Lucite® Acrylic with Microban®



*Manor Series spas feature Intensive Neck Therapy™ jets*



*Manor Series spas available with Towel Warmer*



## M570

Revitalize with a rigorous turbo air massage to release tension and stress, then let the warm, rippling waters of this versatile spa re-energize and restore. The comfy reversible lounger makes it perfect for quiet relaxation or enjoyable entertaining. Three additional contoured bucket seats and a special captain's chair let you comfortably accommodate six adults.

- 870 lbs./360 gal. Capacity
- 85" square x 38"H
- Three Pumps/10.6 hp Market-Rated
- Single Reversible Lounger
- Captain's Chair
- Intensive Neck Therapy™ (2 total)
- Turbo Jet/Tsunami Jet/Waterfall
- Optional Intensive Foot Massage™

**5-6**  
PERSON

**70**  
JETS

**3**  
PUMPS

*Additional features on pages 26–27*

**ESTATE SERIES**





Shown with a Grey Durabil™ cabinet and Lunar Lucite® Acrylic with Microban®



*User friendly Multi-Function Controller*



*Estate Series spas available with Intensive Foot Massage™*



## E950

Experience all the soothing relaxation, refreshing therapy and sociable recreation of the spa lifestyle in one roomy and remarkable spa. From the soothing action of 50 water and air jets to the optional Intensive Foot Massage™ and Intensive Neck Therapy™, this five-person spa pampers from head to toe.

- 900 lbs./360 gal. Capacity
- 94" x 81" x 38"H
- Three Pumps/7.8 hp Market-Rated
- Single Lounger
- Captain's Chair
- Optional Intensive Foot Massage™
- Optional Intensive Neck Therapy™

**4-5**  
PERSON

**50**  
JETS

**3**  
PUMPS

*Additional features on pages 26-27*

● = Equipment Access    ◆ = Drain

## E850 MODEL



Convenient SPA FROG®  
Sanitization System



The E850 is available  
with multi-person foot jets



Shown with a Grey Durabilt™  
cabinet and Galaxy Green  
Lucite® Acrylic with Microban®



## E850

Enjoy both quiet, cozy couple's time and special get-togethers with family and friends. The choice is yours with this spacious and flexible eight-person spa. Ergonomically styled seating and a unique configuration of 50 water and air jets provide the ultimate in comfort, luxury, and relaxation for everyone.

- 900 lbs./430 gal. Capacity
- 93" square x 40"H
- Three Pumps/7.8 hp Market-Rated
- Non-Lounger
- Captain's Chairs (3 total)
- Optional Intensive Foot Massage™
- Optional Intensive Neck Therapy™

**8**  
PERSON

**50**  
JETS

**3**  
PUMPS

*Additional features on pages 26-27*

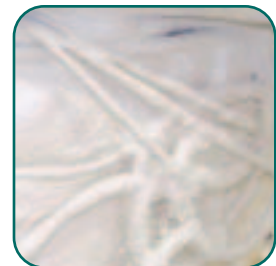




Shown with a cedar-stained Cedar cabinet and Mystic Emerald Lucite® Acrylic.



*All Emerald spas available with LED Lighting*



*All Emerald spas available with Ultra Foam™ Insulation*



## E750

Treat yourself to a quality spa that has it all. Stretch out and enjoy your own custom hydrotherapy regimen in the roomy luxury of double loungers. Then reach out and invite family and friends to join you for quality time and healthy fun. A contoured captain's chair and ultra-comfortable bucket seats provide unique seating options for six adults.

- 890 lbs./315 gal. Capacity
- 93" square x 38"H
- Three Pumps/7.8 hp Market-Rated
- Double Lounger
- Captain's Chair
- Optional Intensive Foot Massage™
- Optional Intensive Neck Therapy™

**6**  
PERSON

**50**  
JETS

**3**  
PUMPS

*Additional features on pages 26–27*

## E650 MODEL



*Captain's Chair*



*All Emerald spas available with Aromatherapy*



Shown with a Redwood Durabilt™ cabinet and MoonScape Lucite® Acrylic with Microban®



## E650

Experience all the soothing relaxation, refreshing therapy and sociable recreation of the spa lifestyle with this spacious six-person spa. Ergonomically styled seating and a unique configuration of 50 water and air jets provide the ultimate in comfort, luxury and healthy fun for everyone.

- 775 lbs./305 gal. Capacity
- 85" square x 38"H
- Three Pumps/7.8 hp Market-Rated
- Non-Lounger
- Captain's Chairs (3 total)
- Optional Intensive Foot Massage™
- Optional Intensive Neck Therapy™

**6**  
PERSON

**50**  
JETS

**3**  
PUMPS

*Additional features on pages 26-27*

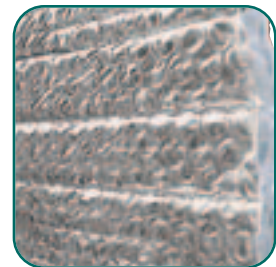




Shown with a grey-stained Cedar cabinet and Silver Marble Lucite® Acrylic.



*Estate Series spas available with Intensive Neck Therapy™ jets*



*All Emerald spas available with Reflectix® Full Insulation*



## E550

Luxuriate in the warm, rippling waters of this versatile spa to restore well-being and re-energize body, mind and spirit. The comfy reversible lounger makes it perfect for quiet couple's relaxation or rigorous hydrotherapy. Three contoured bucket seats and a special captain's chair provide plenty of additional options for entertaining.

- 775 lbs./360 gal. Capacity
- 85" square x 38"H
- Three Pumps/7.8 hp Market-Rated
- Single Reversible Lounger
- Captain's Chair
- Optional Intensive Foot Massage™
- Optional Intensive Neck Therapy™

**5-6**  
PERSON

**50**  
JETS

**3**  
PUMPS

*Additional features on pages 26-27*

## E450 MODEL



*Estate Series spas available with Intensive Foot Massage™*



*User friendly Multi-Function Controller*



Shown with a Grey Durabilt™ cabinet and Lunar Lucite® Acrylic with Microban®



## E450

Pamper yourself or party with family and friends. This sociable, spacious spa easily accommodates seven adults, with plenty of room to move around. A unique configuration of water and air jets at each seat delivers a different therapy, so everyone can enjoy the perfect spa experience.

- 840 lbs./340 gal. Capacity
- 87" octagon x 38"H
- Three Pumps/7.8 hp Market-Rated
- Non-Lounger
- Captain's Chair
- Optional Intensive Foot Massage™
- Optional Intensive Neck Therapy™

**7**  
PERSON

**50**  
JETS

**3**  
PUMPS

*Additional features on pages 26-27*





Shown with a Redwood Durabilt™ cabinet and Sunset Swirl Lucite® Acrylic with Microban®



*All Emerald spas feature MassageAir™ Therapy System*



*All Emerald spas feature a convenient E-Z Drain*



## E340

Restore your spirits with a rigorous hydro-massage. Or simply relax in the soothing bubbles and gently rippling water. The choice is yours with this versatile indoor/outdoor spa. It's the perfect retreat when the two of you choose to be alone. It's also a refreshing option for entertaining, with comfortable seating for up to five adults.

- 760 lbs./280 gal. Capacity
- 88" x 75" x 32"H
- Three Pumps/7.8 hp Market-Rated
- Single Lounger
- Captain's Chair
- Optional Intensive Foot Massage™
- Optional Intensive Neck Therapy™

**4-5**  
PERSON

**40**  
JETS

**3**  
PUMPS

*Additional features on pages 26-27*

# CHATEAU SERIES





Shown with a redwood-stained Cedar cabinet and Almond Pearl Lucite® Acrylic with Microban®



*Convenient SPA FROG® Sanitization System*



*Captain's Chair*



## C640

Enjoy the ultimate in recreation, relaxation and revitalization all in one roomy and remarkable spa. Ergonomically designed seating comfortably accommodates six adults, while 40 water and air jets deliver a delightful combination of invigorating massage and soothing hydrotherapy.

- 730 lbs./305 gal. Capacity
- 85" square x 38"H
- Two Pumps/5.8 hp Market-Rated
- Non-Lounger
- Captain's Chairs (3 total)
- Optional LED Lighting
- Optional Aromatherapy

**6**  
PERSON

**40**  
JETS

**2**  
PUMPS

*Additional features on pages 26–27*

● = Equipment Access    ◆ = Drain

## C540 MODEL



All Emerald spas available with Ultra Foam™ Insulation



All Emerald spas available with Aromatherapy



Shown with a Grey Durabilt™ cabinet and Starry Night Lucite® Acrylic with Microban®



## C540

Revitalize with a rigorous massage to release tension and stress, then let the warm, rippling waters of this versatile spa re-energize and restore. The comfy reversible lounger makes it perfect for quiet couple's relaxation. Three additional contoured bucket seats and a special captain's chair let you comfortably entertain family and friends.

- 785 lbs./360 gal. Capacity
- 85" square x 38"H
- Two Pumps/5.8 hp Market-Rated
- Single Reversible Lounger
- Captain's Chair
- Optional LED Lighting
- Optional Aromatherapy

**5-6**  
PERSON

**40**  
JETS

**2**  
PUMPS

*Additional features on pages 26-27*

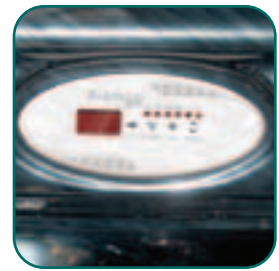




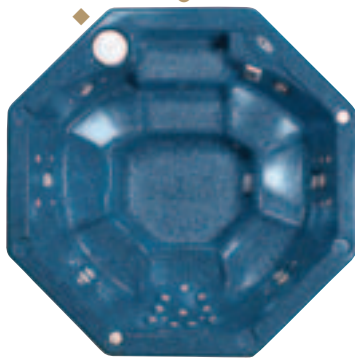
Shown with a Redwood Durabilt™ cabinet and Starry Night Lucite® Acrylic with Microban®



*All Emerald spas available with LED Lighting*



*User friendly Multi-Function Controller*



## C440

Unwind and entertain in this sociable, spacious spa that easily accommodates seven adults, including room to circulate. Each contoured seat features a unique configuration of water and air jets, so everyone can find their perfect combination of invigorating massage and soothing comfort.

- 840 lbs./340 gal. Capacity
- 87" octagon x 38"H
- Two Pumps/5.8 hp Market-Rated
- Non-Lounger
- Captain's Chair
- Optional LED Lighting
- Optional Aromatherapy

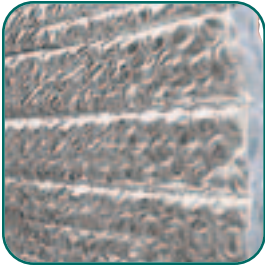
**7**  
PERSON

**40**  
JETS

**2**  
PUMPS

*Additional features on pages 26–27*

## C335 MODEL



All Emerald spas available with Reflectix® Full Insulation



All Emerald spas feature MassageAir™ Therapy System



Shown with a redwood-stained Cedar cabinet and Mooncape Lucite® Acrylic with Microban®



## C335

Recharge body, mind, spirit—and relationships—with a rewarding time-out together in this spacious indoor/outdoor spa. It's the perfect place to enjoy each other's company, engage in stimulating conversation, and experience the ultimate in refreshing relaxation.

- 760 lbs./280 gal. Capacity
- 88" x 75" x 32"H
- Two Pumps/5.8 hp Market-Rated
- Single Lounger
- Captain's Chair
- Optional LED Lighting
- Optional Aromatherapy

**4-5**  
PERSON

**35**  
JETS

**2**  
PUMPS

Additional features on pages 26-27





Shown with a Grey Durabilite™ cabinet and Pearl Shadow Lucite® Acrylic with Microban®



*All Emerald spas feature Ultra Strong shell construction*



*All Emerald spas feature a convenient E-Z Drain*



## C230

Revive your spirits and relieve the day's stress in the spacious comfort of this classic indoor/outdoor spa. Experience the perfect combination of powerful massage and soothing relaxation. With five distinct places to sit comfortably, there's plenty of room to share the bliss.

- 580 lbs./200 gal. Capacity
- 83" x 71" x 32"H
- Two Pumps/5.8 hp Market-Rated
- Single Reversible Lounger
- Optional LED Lighting
- Optional Aromatherapy

**5**  
PERSON

**30**  
JETS

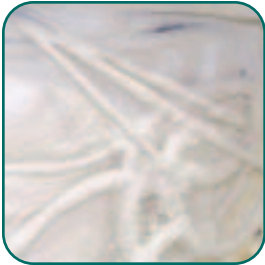
**2**  
PUMPS

*Additional features on pages 26–27*

## C125 MODEL



*Floating SPA FROG®  
Sanitization System on  
C125 and C230 Models*



*All Emerald spas available  
with Ultra Foam™ Insulation*



Shown with a Grey Durabilite™  
cabinet and Starry Night Lucite®  
Acrylic with Microban®



## C125

Reconnect with each other in the peace and tranquility of your own private spa. Indoors or out, this compact, yet deceptively comfortable, couple's lounger creates the perfect therapeutic environment for relaxation and togetherness.

- 480 lbs./170 gal. Capacity
- 77" x 55" x 30"H
- Two Pumps/5.8 hp Market-Rated
- Single Reversible Lounger
- Optional LED Lighting
- Optional Aromatherapy

**2-3**  
PERSON

**25**  
JETS

**2**  
PUMPS

*Additional features on pages 26-27*



## Spa Cabinets

All wood cabinets are built from premium grade cedar and are available in natural cedar stain, redwood stain or grey stain. Any Emerald spa may be upgraded to a Durabilt™ synthetic wood cabinet which holds its look for years amid seasonal changes.



Designer Cabinet Cedar Stain



Standard Cabinet Cedar Stain



Designer Cabinet Grey Stain



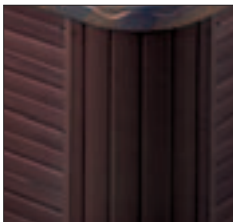
Standard Cabinet Grey Stain



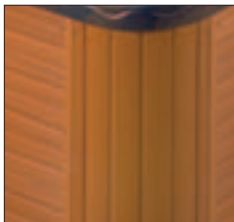
Designer Cabinet Redwood Stain



Standard Cabinet Redwood Stain



Mahogany Durabilt™



Redwood Durabilt™



Grey Durabilt™

## Spa Shells

Available in a lustrous array of colors, our quality shell construction ensures these beautiful finishes will last the lifetime of the spa. Emerald's spas begin with Lucite® Acrylic with Microban® and before fiberglass is applied to the acrylic, we sand the spa and spray it with our exclusive Acrybond™. This special resin provides a total moisture barrier to eliminate the possibility of blistering, cracking, or delaminating.



Almond Pearl



Canyon



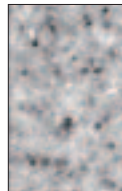
Cobalt



Desert Horizon



Galaxy Green



Lunar



Majestic Sky



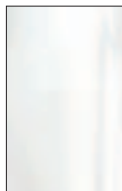
Mystic Emerald\*



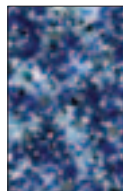
Moonscape



Pearl Shadow



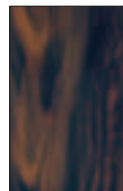
Silver Marble\*



Starry Night



Summer Sapphire\*



Sunset Swirl



\*Does not feature Microban®

## FEATURES & SPECIFICATIONS

	Manor Series					Estate Series		
Model	M970	M870	M770	M670	M570	E950	E850	E750
<b>Total Jets</b>	70	70	70	70	70	50	50	50
<b>Seating</b>	4-5	8	6	6	5-6	4-5	8	6
<b>Dry Weight</b>	965 lbs.	1015 lbs.	990 lbs.	870 lbs.	870 lbs.	900 lbs.	900 lbs.	890 lbs.
<b>Capacity</b>	360 gal.	430 gal.	315 gal.	305 gal.	360 gal.	360 gal.	430 gal.	315 gal.
<b>Overall Dimension</b>	94" x 81" x 38"H	93" sq. x 40"H	93" sq. x 38"H	85" sq. x 38"H	85" sq. x 38"H	94" x 81" x 38"H	93" sq. x 40"H	93" sq. x 38"H
<b>Pumps/Horsepower*</b>	3/10.6	3/10.6	3/10.6	3/10.6	3/10.6	3/7.8	3/7.8	3/7.8
Horsepower (Continuous Duty)	6	6	6	6	6	5	5	5
Power Requirement (Voltage/Amp.)	240V/50A	240V/50A	240V/50A	240V/50A	240V/50A	240V/50A	240V/50A	240V/50A
Lucite® Acrylic with Microban®	✓	✓	✓	✓	✓	✓	✓	✓
ErgoComfort™ Seating	✓	✓	✓	✓	✓	✓	✓	✓
Lounger	Single	na	Double	na	Single	Single	na	Double
Durabilt™ Synthetic Cabinet	◆	◆	◆	◆	◆	◆	◆	◆
Cedar Designer Cabinet	◆	◆	◆	◆	◆	na	na	na
Cedar Standard Cabinet	na	na	na	na	na	◆	◆	◆
Ultra Foam™ Insulation	◆	◆	◆	◆	◆	◆	◆	◆
Reflectix® Full Insulation	◆	◆	◆	◆	◆	◆	◆	◆
EverClean™ Water Purification	✓	✓	✓	✓	✓	✓	✓	✓
Pressurized Filtration System	✓	✓	✓	✓	✓	✓	✓	✓
Filter with Microban®	✓	✓	✓	✓	✓	✓	✓	✓
SPA FROG® Sanitization System	In-line	In-line	In-line	In-line	In-line	In-line	In-line	In-line
Ozone Generator	◆	◆	◆	◆	◆	◆	◆	◆
MassageAir™ Therapy System	✓	✓	✓	✓	✓	✓	✓	✓
High-Performance Jet Select™	✓	✓	✓	✓	✓	✓	✓	✓
Pump Standby Mode	✓	✓	✓	✓	✓	✓	✓	✓
Standard/Economy Program Heating	✓	✓	✓	✓	✓	✓	✓	✓
Temperature and Panel Lock	✓	✓	✓	✓	✓	✓	✓	✓
Freeze Protection	✓	✓	✓	✓	✓	✓	✓	✓
Aromatherapy	◆	◆	◆	◆	◆	◆	◆	◆
LED Lighting	◆	◆	◆	◆	◆	◆	◆	◆
Intensive Foot Massage™	◆	◆	◆	◆	◆	◆	◆	◆
Intensive Neck Therapy™	2 sets	2 sets	2 sets	2 sets	2 sets	◆	◆	◆
Turbo/Whirlpool Jet	✓	✓	✓	✓	✓	na	na	na
Tsunami Jet	✓	✓	✓	✓	✓	na	na	na
Stainless Steel Jets	◆	◆	◆	◆	◆	◆	◆	◆
Waterfall	✓	✓	✓	✓	✓	na	na	na
Towel Warmer	◆	◆	◆	◆	◆	na	na	na
Elite Audio System	na	na	na	na	na	◆	◆	◆
HydroVibe™ Audio System	◆	◆	◆	◆	◆	na	na	na
Structure Warranty	25 year	25 year	25 year	25 year	25 year	25 year	25 year	25 year
Surface Warranty	7 year	7 year	7 year	7 year	7 year	7 year	7 year	7 year
Equipment Warranty (Parts & Labor)	5 year	5 year	5 year	5 year	5 year	3 year	3 year	3 year

✓ = standard ◆ = optional oct. = octagon sq. = square na = not available \*market rated horsepower

				Chateau Series					
E650	E550	E450	E340	C640	C540	C440	C335	C230	C125
50	50	50	40	40	40	40	35	30	25
6	5-6	7	4-5	6	5-6	7	4-5	5	2-3
775 lbs.	775 lbs.	840 lbs.	760 lbs.	730 lbs.	785 lbs.	840 lbs.	760 lbs.	580 lbs.	480 lbs.
305 gal.	360 gal.	340 gal.	280 gal.	305 gal.	360 gal.	340 gal.	280 gal.	200 gal.	170 gal.
85" sq.x38"H	85" sq.x38"H	87" oct.x38"H	88"x75"x32"H	85" sq.x38"H	85" sq.x38"H	87" oct.x38"H	88"x75"x32"H	83"x71"x32"H	77"x55"x30"H
3/7.8	3/7.8	3/7.8	3/7.8	2/5.8	2/5.8	2/5.8	2/5.8	2/5.8	2/5.8
5	5	5	5	3.5	3.5	3.5	3.5	3.5	3.5
240V/50A	240V/50A	240V/50A	240V/50A	240V/50A	240V/50A	240V/50A	240V/50A	240V/50A	240V/50A
✓	✓	✓	✓	✓	✓	✓	✓	✓	✓
✓	✓	✓	✓	✓	✓	✓	✓	✓	✓
na	Single	na	Single	na	Single	na	Single	Single	Single
◆	◆	◆	◆	◆	◆	◆	◆	◆	◆
na	na	na	na	na	na	na	na	na	na
◆	◆	◆	◆	◆	◆	◆	◆	◆	◆
◆	◆	◆	◆	◆	◆	◆	◆	◆	◆
◆	◆	◆	◆	◆	◆	◆	◆	◆	◆
✓	✓	✓	✓	✓	✓	✓	✓	✓	✓
✓	✓	✓	✓	✓	✓	✓	✓	✓	✓
✓	✓	✓	✓	✓	✓	✓	✓	✓	✓
In-line	In-line	In-line	In-line	In-line	In-line	In-line	In-line	Floating	Floating
◆	◆	◆	◆	◆	◆	◆	◆	◆	◆
✓	✓	✓	✓	✓	✓	✓	✓	✓	✓
✓	✓	✓	✓	✓	✓	✓	✓	✓	✓
✓	✓	✓	✓	na	na	na	na	na	na
✓	✓	✓	✓	na	na	na	na	na	na
✓	✓	✓	✓	na	na	na	na	na	na
✓	✓	✓	✓	✓	✓	✓	✓	✓	✓
◆	◆	◆	◆	◆	◆	◆	◆	◆	◆
◆	◆	◆	◆	◆	◆	◆	◆	◆	◆
◆	◆	◆	◆	na	na	na	na	na	na
◆	◆	◆	◆	na	na	na	na	na	na
na	na	na	na	na	na	na	na	na	na
na	na	na	na	na	na	na	na	na	na
◆	◆	◆	◆	◆	◆	◆	◆	◆	◆
na	na	na	na	na	na	na	na	na	na
na	na	na	na	na	na	na	na	na	na
◆	◆	◆	◆	na	na	na	na	na	na
na	na	na	na	na	na	na	na	na	na
25 year	25 year	25 year	25 year	25 year	25 year	25 year	25 year	25 year	25 year
7 year	7 year	7 year	7 year	7 year	7 year	7 year	7 year	7 year	7 year
3 year	3 year	3 year	3 year	3 year	3 year	3 year	3 year	3 year	3 year

Features and Specifications are subject to change without notification

## Select a Spa That Fits Your Lifestyle

MODEL	Manor Series THREE PUMPS	Estate Series THREE PUMPS	Chateau Series TWO PUMPS
<b>900 MODEL</b> 94" x 81" x 38"H, Single Lounger	<b>M970</b> 50 water jets, 20 air jets	<b>E950</b> 30 water jets, 20 air jets	
<b>800 MODEL</b> 93" x 93" x 40"H, Non-Lounger	<b>M870</b> 50 water jets, 20 air jets	<b>E850</b> 30 water jets, 20 air jets	
<b>700 MODEL</b> 93" x 93" x 38"H, Double Lounger	<b>M770</b> 50 water jets, 20 air jets	<b>E750</b> 30 water jets, 20 air jets	
<b>600 MODEL</b> 85" x 85" x 38"H, Non-Lounger	<b>M670</b> 50 water jets, 20 air jets	<b>E650</b> 30 water jets, 20 air jets	<b>C640</b> 25 water jets, 15 air jets
<b>500 MODEL</b> 85" x 85" x 38"H Single Reversible Lounger	<b>M570</b> 50 water jets, 20 air jets	<b>E550</b> 30 water jets, 20 air jets	<b>C540</b> 25 water jets, 15 air jets
<b>400 MODEL</b> 87" x 87" x 38"H, Octagon		<b>E450</b> 30 water jets, 20 air jets	<b>C440</b> 25 water jets, 15 air jets
<b>300 MODEL</b> 88" x 75" x 32"H, Single Lounger		<b>E340</b> 25 water jets, 15 air jets	<b>C335</b> 20 water jets, 15 air jets
<b>200 MODEL</b> 83" x 71" x 32"H Single Reversible Lounger			<b>C230</b> 20 water jets, 10 air jets
<b>100 MODEL</b> 77" x 55" x 30"H, Couples Spa			<b>C125</b> 15 water jets, 10 air jets

ErgoComfort™, Durabilt™, Ultra Foam™, EverClean™, MassageAir™, High-Performance Jet Select™, Intensive Foot Massage™, Intensive Neck Therapy™, HydroVibe™, Acrybond™ and Space Saver II™ are trademarks of Emerald Spa Corporation. Reflectix® is a registered trademark of Reflectix Inc. Lucite® is a registered trademark of Lucite International. Microban® is a registered trademark of Microban International Ltd. SPA FROG® is a registered trademark of King Technology Inc.



4150 East Paris Ave., Kentwood, MI 49512  
800 766 7727 Fax 616 698 0861  
[www.emeraldspa.com](http://www.emeraldspa.com)